

WELCOME

TO



FDSPharmacy

Learn and Educate

This is an Education Platform

We provide Free PDF Notes and Videos Classes for Pharmacy Students

Web Site <http://www.fdspharmacy.in/>

You tube <https://www.youtube.com/channel/UC77iEsiuZolU4pB8WAJIR5Q>

What app <https://chat.whatsapp.com/IzSgXtFEvhS4LN5xhUgq5z>

Telegram <https://t.me/+cvxm17xSloA4MjVI>

Face book <https://www.facebook.com/Fdspharmacy-105764311994440/>

E-mail fdspharmacyinfo@gmail.com

Diploma in Pharmacy 1st Year

Human Anatomy & Physiology

Experiment

To study the bones of the trunk, ribs, sternum and vertebral column of humans.

Aim:

To study the bones of the trunk, ribs, sternum and vertebral column of humans.

Reference :

Dr. Gupta G.D , Dr. Sharma Shailesh , Dr. Sharma Rahul Kumar ,
“Practical Manual of Human Anatomy and Physiology” Published by Nirali
Prakashan , Pg.No 39 - 42

Theory:

Bones of the Trunk There are total 51 trunk bones comprising 26 vertebrae, 24 ribs and the sternum.

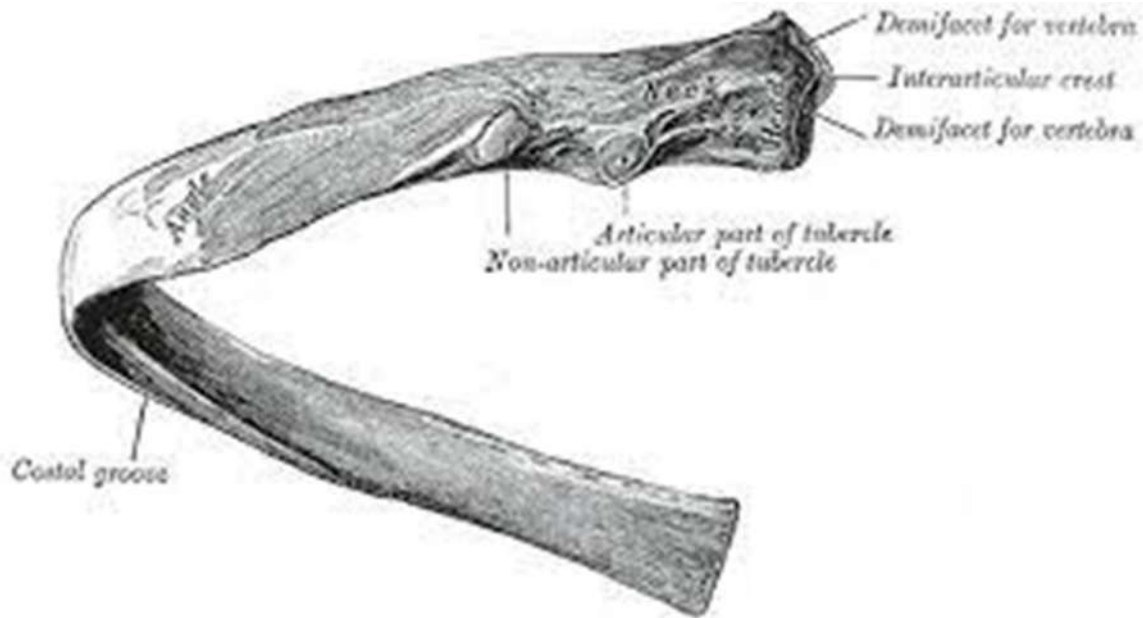
Sternum

This flat bone is located in the centre of the chest's frontal part, directly beneath the skin. The topmost part, the manubrium, articulates with the clavicles at the sternoclavicular joints and with the first two pairs of ribs. The ribs are attached to the body or centre part. The xiphoid process is the bone's tip.

Ribs

The lateral walls of the thoracic cage are made up of 12 pairs of ribs. They are elongated curve bones that articulate posteriorly with the vertebral column. True ribs are the first seven pairs of rib cage that articulate directly with the sternum.

The next three pairs do not articulate directly. The lower two pairs of ribs, known as floating ribs, do not join the sternum at all and have free anterior tips. The ribcage is a flexible structure that can change shape and size during breathing according to the arrangement of ribs and the amount of cartilage present

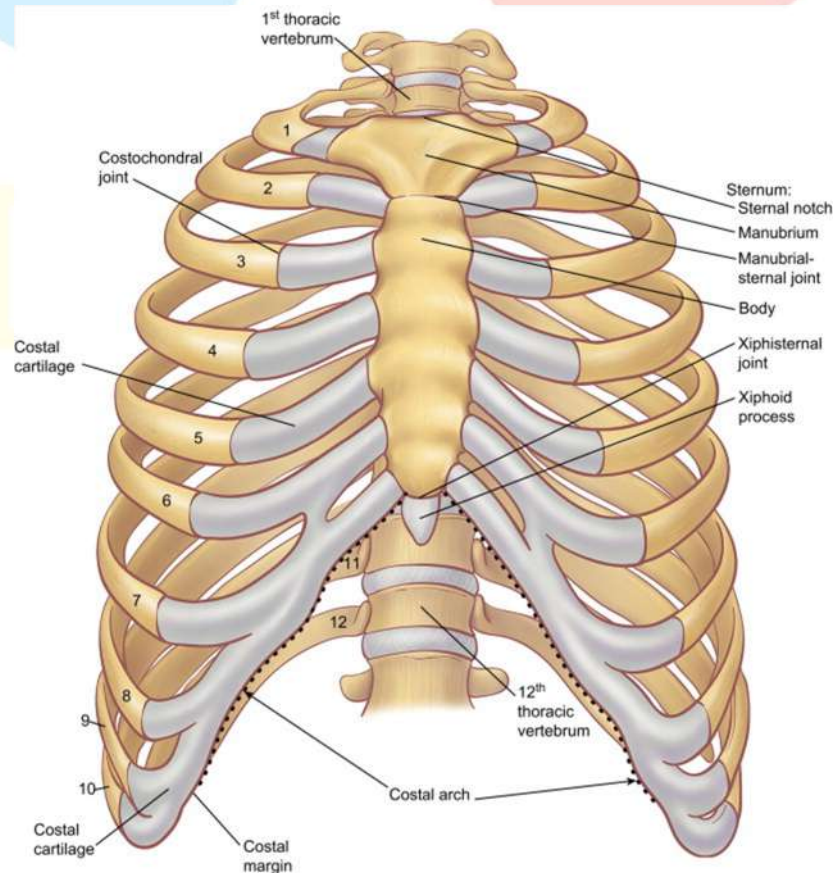


Vertebral Column

The vertebral column is made up of 26 bones. 24 individual vertebrae that extend downwards from the occipital bone of the skull, then the sacrum, which is made up of five fused vertebrae, and lastly the coccyx, or tail, which is made up of three to five small fused vertebrae. The vertebral column is divided into the following regions:

1. **Cervical Vertebrae:** They are the smallest vertebrae in the body. The atlas and axis are the first two typical cervical vertebrae. The atlas, the first cervical vertebra, is the bone that supports the head. There are total of seven cervical vertebrae.
2. **Thoracic Vertebrae:** They are made up of 12 bones. As this section of the vertebral column supports the higher body weight, they are larger than cervical vertebrae

3. **Lumbar Vertebrae:** They are the largest of the vertebrae as they support the weight of the upper body. They have substantial spinous processes for attaching the lower back muscles.
4. **Sacrum:** It is a triangular or wedge-shaped bone with a concave internal surface made up of five rudimentary vertebrae fused together. The 5 lumbar vertebrae articulate with the upper section, or base. It forms a sacroiliac joint with the ilium on each side, and it articulates with the coccyx at its inferior tip. The anterior edge of the base, the promontory, protrudes into the pelvic cavity.
5. **Coccyx:** It is made up of four terminal vertebrae fused together to form a tiny triangular bone with a broad base that articulates with the sacrum's tip.



Result: The bones of the trunk, ribs, sternum and vertebral column of human were studied in detail.

Hello

Friends

If you Get Any Help From This Notes /

Videos

Next You Turn To Help Us

Please Contribute Some Amount

To Our

FDSPharmacy Team

Phone pe 6398439940

Paytm 6398439940

Google Pay 6398439940



Amir Khan

Thank You

Keep Supporting